

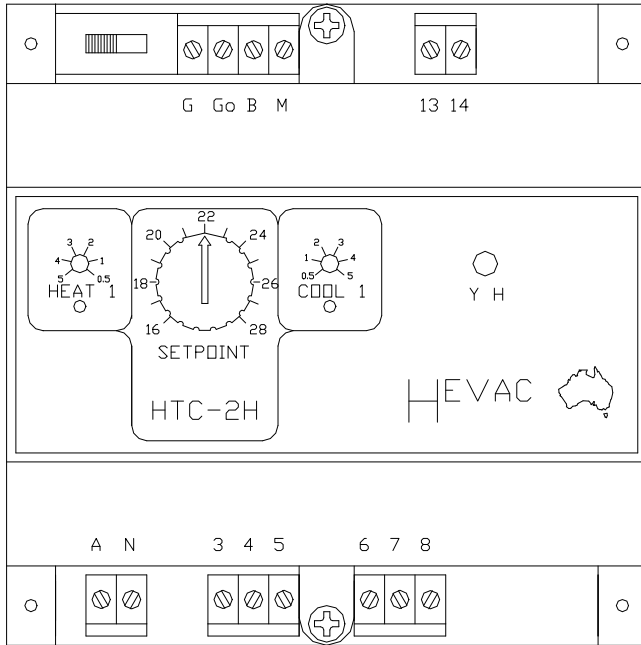
HTC SERIES



Dual Voltage
Enabled Controller ®

HTC- 2H

**1 HEAT/1 COOL
CONTROLLER with
MODULATING HEATING
OUTPUT**



*The **HTC-2H** temperature controller is primarily designed for the control of 1 Heat and 1 Cool air-conditioning units, and also incorporates a modulating 0-10 VDC heating output.*

This output can be used to modulate either a hot water valve or an electric element current valve.

*The **HTC-2H** controller is ideally suited for DIN rail mounting in a switchboard, or directly inside the A/C unit if required.*

Features

- Australian made and designed.
- Power Supply can be either 24v or 240v A.C ®
- 10 AMP (resistive) Potential free relay contacts.
- L.E.D Indication of all outputs.
- Various remote sensor options available.
- Mounts in most M.C.B enclosures.
- Modulating 0-10 VDC Heating output.

HEAD OFFICE:

54 Howleys Road,
Notting Hill, Vic. 3168
Phone: (03) 9562 7888
Fax: (03) 9562 7835

Web Site Address

www.hevac.com.au

Email Contacts

SALES: sales@hevac.com.au

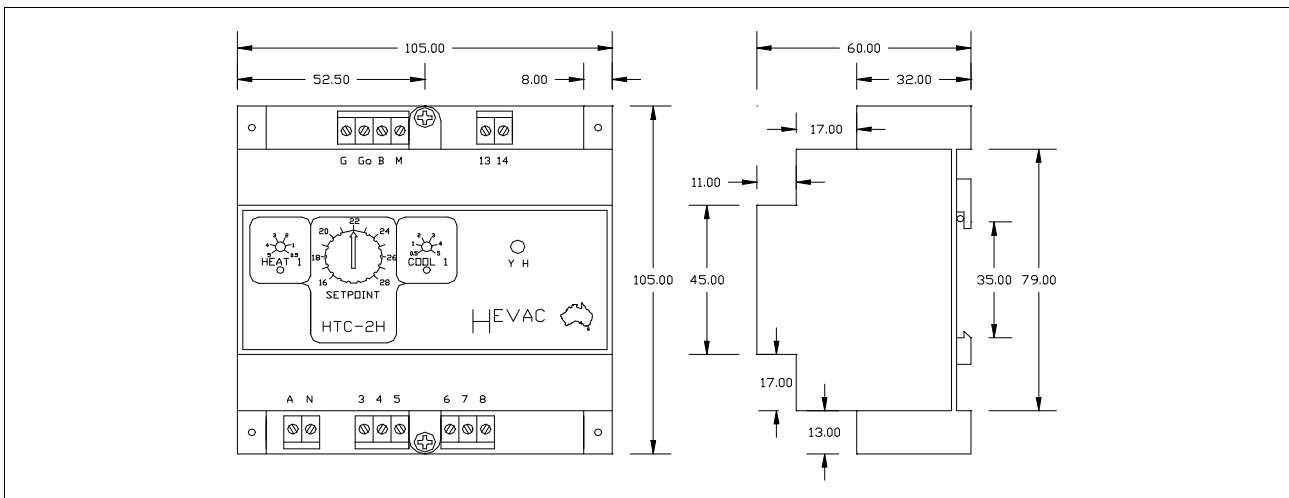
TECHNICAL: technical@hevac.com.au

HTC-2H Technical Specifications

<i>Power supply</i>	24VAC or 240VAC
<i>Power consumption 240 volts</i>	7 VA
<i>Power consumption 24 volts</i>	1 VA
<i>Modulating Heating output</i>	0-10 VDC from Setpoint
<i>Modulating Heating output Proportional Band</i>	1.0 Degrees Celsius
<i>Heating and Cooling relay outputs</i>	240VAC 10 amp resistive, 3 amp inductive
<i>Temperature range</i>	16 to 28 Degrees Centigrade
<i>Switching differential for Heating Stage</i>	0.3 Degrees Centigrade
<i>Switching differential for Cooling Stage</i>	0.3 Degrees Centigrade
<i>Stage start point adjustment range for relays</i>	0.5 to 5.0 Degrees Centigrade
<i>Output indication</i>	Green LED for Cooling Red LED for Heating
<i>(Intensity of LED varies with the Signal Output)</i>	Red LED for 0-10VDC Heating Output
<i>Mounting method</i>	35mm DIN rail (Not supplied)

Dimensions

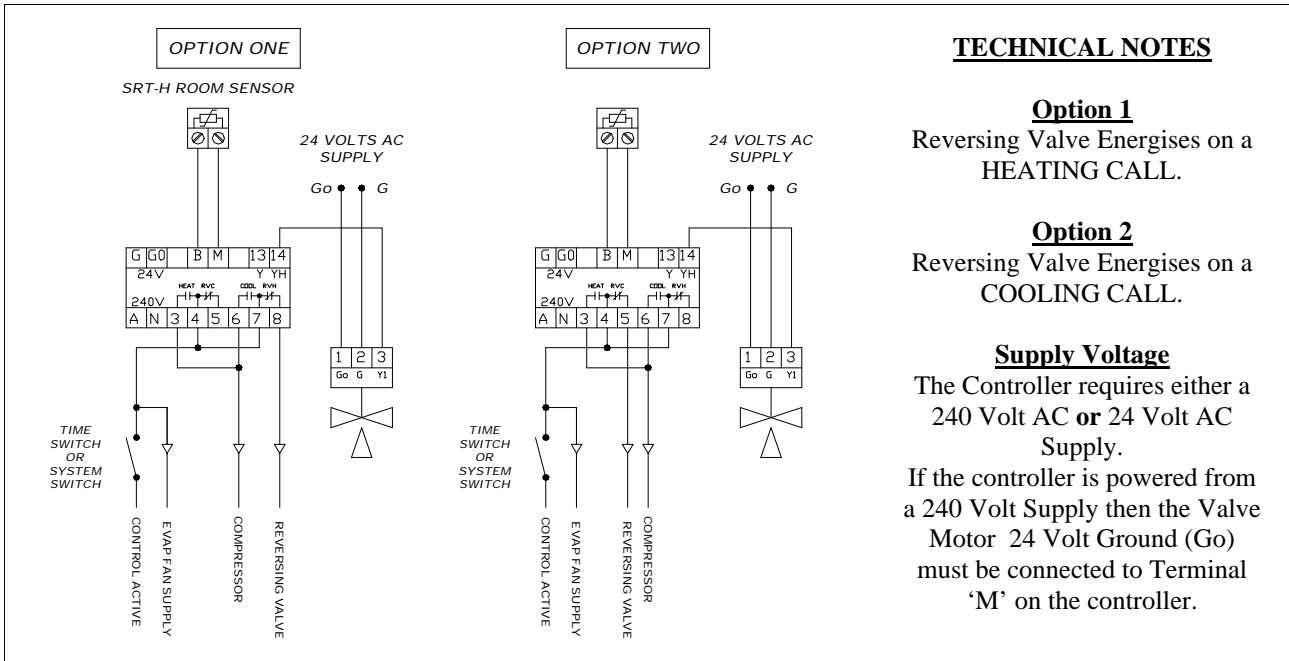
ALL DIMENSIONS IN MILLIMETRES



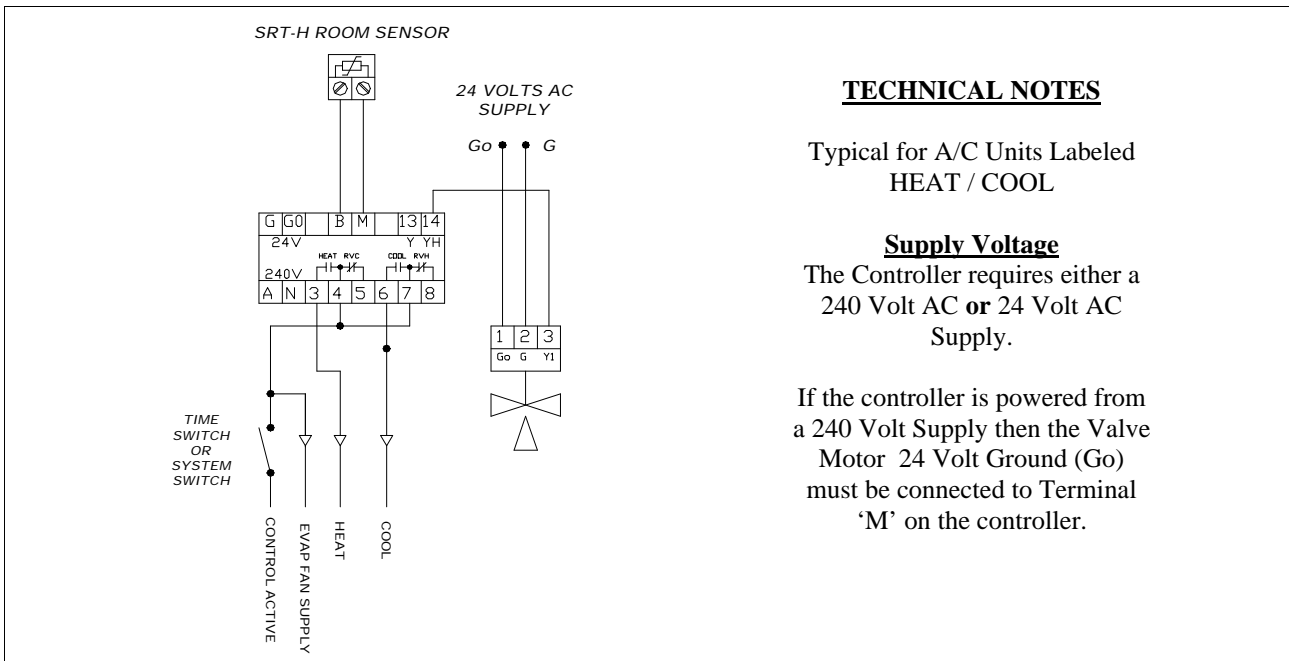
Terminal Designations

G	24 VOLT AC SUPPLY ACTIVE	A & N	240 VOLT AC SUPPLY
Go	24 VOLT AC SUPPLY GROUND REFERENCE	3	HEATING STAGE 1 OUTPUT
B	SENSOR INPUT	4	(HEATING STAGE 1 & R/V FOR COOL) COMMON
M	SENSOR INPUT COMMON	5	REVERSING VALVE FOR COOLING OUTPUT
13	Y SIGNAL	6	COOLING STAGE 1 OUTPUT
14	0-10VDC HEATING OUTPUT	7	(COOLING STAGE 1 & R/V FOR HEAT) COMMON
		8	REVERSING VALVE FOR HEATING OUTPUT

HTC-2H for Compressor Reversing Valve Type A/C Units with Heating Valve



Electrical Schematic for Heat / Cool Type A/C Units with Heating Valve



Quick Test Information

All HEVAC Controllers are Factory Calibrated and Pre-set to Industry Standard Defaults prior to dispatch. If you require further information on these Settings please Refer to the Technical Specifications Page.

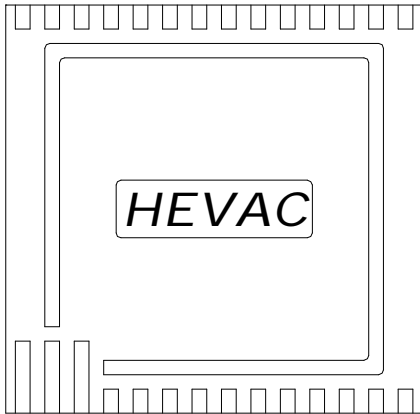
To quickly confirm that a controller is wired to the correct sensor and to TEST for Heating & Cooling Changeover the following procedure can be carried out.

- STEP 1: Dial setpoint up or down until you do not have a Heating or Cooling call. (ie Deadband Position)
- STEP 2: Open circuit the sensor wires at the Sensor. The controller should go into full COOLING Mode.
- STEP 3: Short circuit the sensor wires at the Sensor. The controller should go into full HEATING Mode.

SRT-H

Wall Mount Room Temperature Sensor (Non-Adjustable)

HEVAC CONTROLS



The **SRT-H** is a wall mount room temperature sensor. It is suitable for use with the **HTC 2 analogue** series temperature controller.

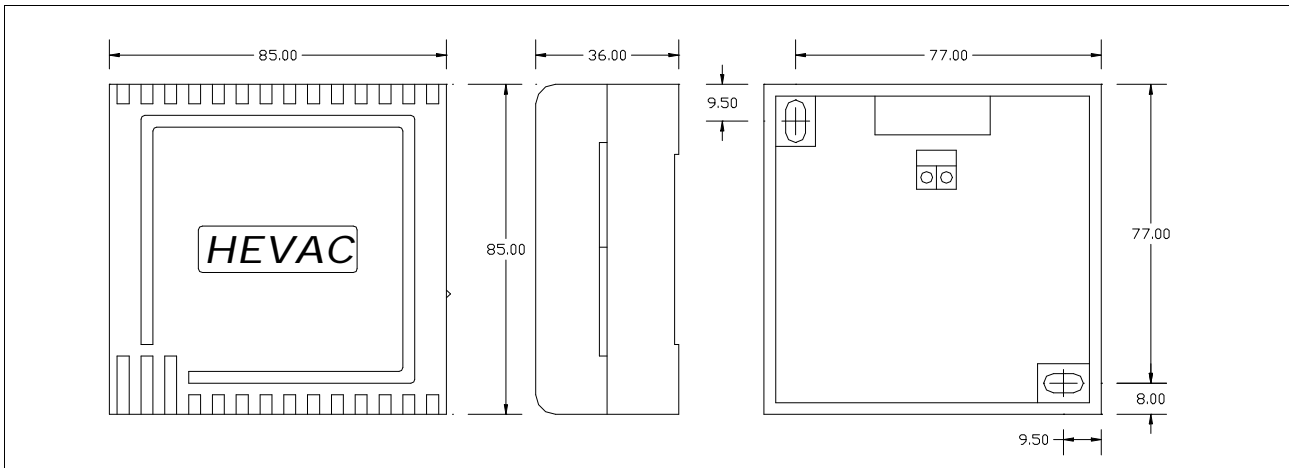
Constructed from high impact ABS plastic, the housing is specifically designed with sensor sensitivity in mind making the **SRT-H** very responsive even in low airflow situations.

Cable entry is from the rear with side knockouts for cable duct on three sides, allowing for easy electrical installation.

Technical Specifications

Control range	16 to 28 Degrees Centigrade
Time constant	3 Minutes
Thermistor characteristics	PTC 2000 ohms at 25 Degrees Centigrade
Wiring Considerations	Screened cable is recommended, earthed at the controller end only
Housing Colour	Cream
Enclosure	IP 31
Measuring Accuracy	+/- One Degrees Centigrade

Dimensions



Thermistor Resistance Characteristics

Temp	Ohms	Temp	Ohms	Temp	Ohms	Temp	Ohms	Temp	Ohms	Temp	Ohms
10.00	1776	14.00	1834	18.00	1894	21.00	1939	23.00	1969	26.00	2015
11.00	1790	15.00	1849	19.00	1909	21.50	1946	23.50	1977	27.00	2031
12.00	1805	16.00	1864	20.00	1924	22.00	1954	24.00	1985	28.00	2047
13.00	1820	17.00	1879	20.50	1931	22.50	1962	25.00	2000	29.00	2062

HTC2H.P2.16072008